

11-1-2013

## November 2013 CVM Library Newsletter

Mississippi State University

Follow this and additional works at: <https://scholarsjunction.msstate.edu/cvmlibrary-newsletters>

---

### Recommended Citation

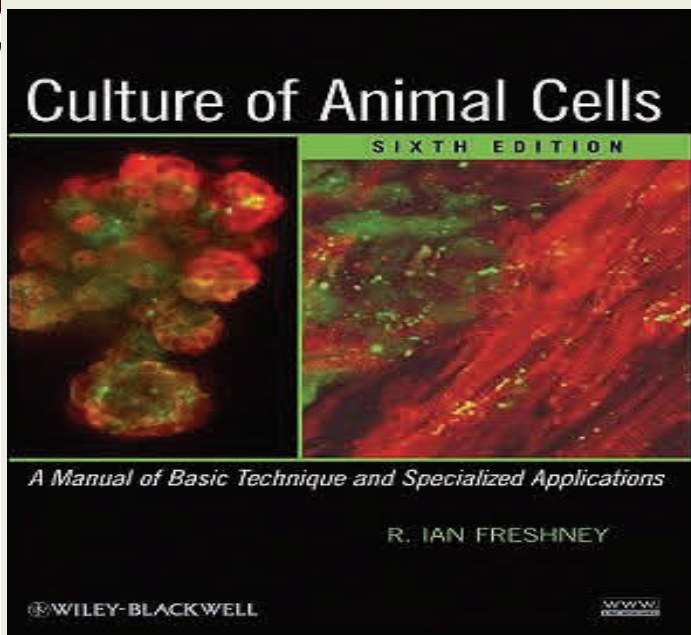
Mississippi State University, "November 2013 CVM Library Newsletter" (2013). *CVM Library Newsletters*. 17.

<https://scholarsjunction.msstate.edu/cvmlibrary-newsletters/17>

This Text is brought to you for free and open access by the College of Veterinary Medicine Library at Scholars Junction. It has been accepted for inclusion in CVM Library Newsletters by an authorized administrator of Scholars Junction. For more information, please contact [jshedd@library.msstate.edu](mailto:jshedd@library.msstate.edu).

# CVM LIBRARY NEWSLETTER

NOV. 2013



## New Book of the Month

*Culture of Animal Cells* by Ian Freshney 2010.  
Call number: QH 585.2 .F74 2010.

<http://goo.gl/siF5LJ>

This is the sixth edition of the leading text in the basic methodology of cell culture, worldwide. Rigorously revised, it features updates on specialized techniques in stem cell research and tissue engineering; updates on molecular hybridization, somatic cell fusion, hybridomas, and DNA transfer; new sections on vitrification and Organotypic Culture, and new chapters on epithelial, mesenchymal,

neuroectodermal, and hematopoietic cells; germs cells/stemcells/amniocytes; and non-mammalian/avian cells. It is written for graduate students, research and clinical scientists, and technicians and laboratory managers in cell and molecular biology labs and genetics labs.

PowerPoint slides of the figures as well as other supplementary materials are available at a companion website:

[www.wiley.com/go/freshney/cellculture](http://www.wiley.com/go/freshney/cellculture)

## 8 New Computers installed in the computer lab!!!

Unfortunately, University ITS has been experience problems with their servers. If you've had difficulty logging in or printing, please be patient while ITS works to correct the problem.

## New Fax Services

The CVM Library will now be offering fax services in accordance with Mississippi State University Libraries.

Send and receive faxes at the front desk. Fax number: (662) 325-1144. Pricing:

- **On-campus and local (Starkville) fax numbers:** Free
- **Incoming faxes:** \$1.00 per page
- **Outgoing faxes to long-distance numbers:** \$2.50 per page

Our doors are always open to help you. Email [cvmlibrary@cvm.msstate.edu](mailto:cvmlibrary@cvm.msstate.edu)  
or call the CVM Library at 662-325-1256



MISSISSIPPI STATE  
UNIVERSITY  
University Libraries

Full time library faculty and staff may fax for students, faculty, and staff of the College of Veterinary Medicine.

## MSU Library Survey

The MSU Libraries are committed to improving your library experience and are conducting a survey to measure the quality of our library services using the Association of Research Libraries' (ARL) LibQUAL+ program. As a direct result of the 2011 survey, the Library Administration enhanced the library program by improving customer service throughout the Libraries; increasing the number of books, electronic books, and electronic journals available; as well as many other improvements to user experience. We once again need your input!

Your participation and feedback through this survey is very important and appreciated. At the end of the survey, register to win a \$100 Barnes and Noble gift certificate, a \$10 Strange Brew gift certificate, or a copy of EndNote!

<http://library.msstate.edu/libsurvey>

Your participation is voluntary and your responses will be confidential. There will be no identifying links between you and your responses. This study (IRB#11-258) has been approved by the MSU Institutional Review Board. If you have any questions about this research project, please feel free to contact LaDonne Delgado at [662-325-7660](tel:662-325-7660) or send an email to [libqual@library.msstate.edu](mailto:libqual@library.msstate.edu). The confidential data from this study will be permanently stored at the Texas A&M University which conducts the survey on behalf of participating libraries and ARL. Summary reports of the combined responses will be provided to the MSU Libraries. You must be 18 years of age to participate.

## Questions or Suggestions?

Email us at [cvmlibrary@cvm.msstate.edu](mailto:cvmlibrary@cvm.msstate.edu)

## New Books at Your CVM Library

Author	Title	Year	Format
Freshney	Culture of Animal Cells	2010	Print
Greene	Infectious Diseases of the Dog and Cat 4 <sup>th</sup> ED.	2012	Print