

Mississippi State University

## Scholars Junction

---

Northeast Mississippi Region

Mississippi Photographs and Postcards

---

1-24-1910

### Street Scene in New Albany, Mississippi

Follow this and additional works at: <https://scholarsjunction.msstate.edu/mss-lampton-images-ms-ne>

---

#### Recommended Citation

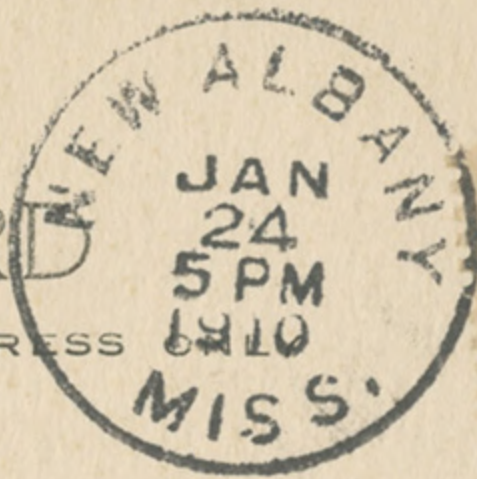
Lucius Marion Lampton, MD Historical Images Collection, Special Collections Department, Mississippi State University

This Postcard is brought to you for free and open access by the Mississippi Photographs and Postcards at Scholars Junction. It has been accepted for inclusion in Northeast Mississippi Region by an authorized administrator of Scholars Junction. For more information, please contact [scholcomm@msstate.libanswers.com](mailto:scholcomm@msstate.libanswers.com).



J. L. S. ROGERS.

STREET SCENE IN NEW ALBANY, MISS.



POST CARD

CORRESPONDENCE

ADDRESS

Miss Nettie Bauermann.  
Elkhorn.  
Wis.

Box 206

New Albany, Miss  
Jan 24. 1910

Dear Nettie:

Your card recd. glad to  
hear from you. I note  
what you say that you didn't  
receive my 1x mac postal it was  
like the one I sent Edith Gates  
I didn't receive your N.Y. card  
either so we were denied alike  
Oh recd. word of a new boy in the  
family. glad you are all well we  
are well & don't by surprise here  
I'd like to call to you well from Aunt Mary.