

12-1-2012

December 2012 CVM Library Newsletter

Mississippi State University

Follow this and additional works at: <https://scholarsjunction.msstate.edu/cvmlibrary-newsletters>

Recommended Citation

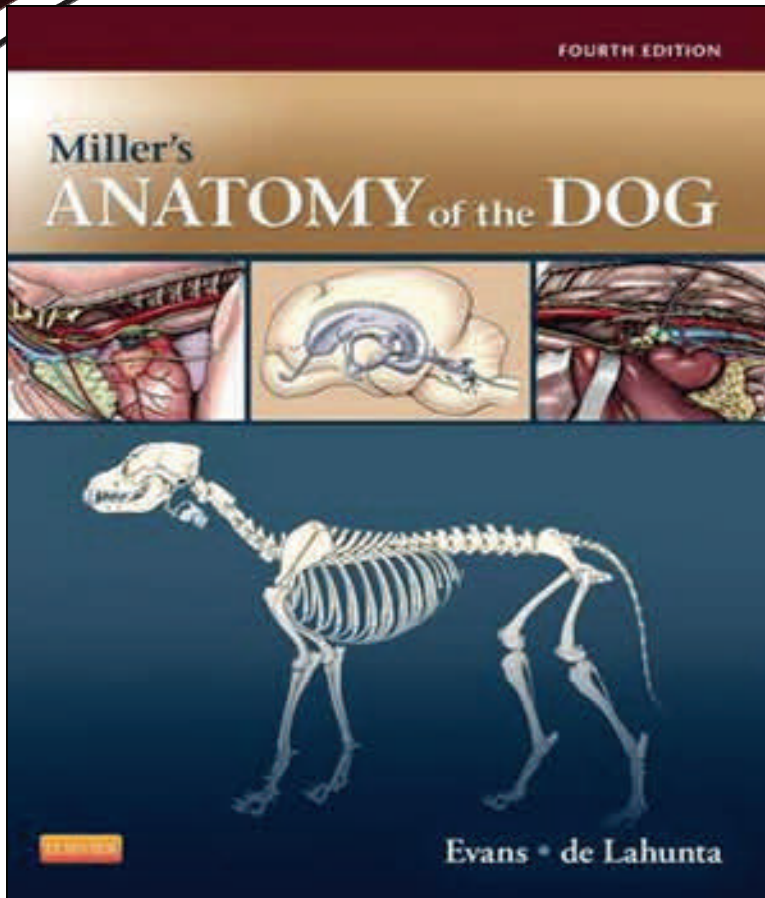
Mississippi State University, "December 2012 CVM Library Newsletter" (2012). *CVM Library Newsletters*. 50.

<https://scholarsjunction.msstate.edu/cvmlibrary-newsletters/50>

This Text is brought to you for free and open access by the College of Veterinary Medicine Library at Scholars Junction. It has been accepted for inclusion in CVM Library Newsletters by an authorized administrator of Scholars Junction. For more information, please contact scholcomm@msstate.libanswers.com.

CVM LIBRARY NEWSLETTER

DEC. 2012



New Book of the Month

Miller's Anatomy of the Dog, 4th ed., by Evans (2013). Call number SF767.D6 M54 2013

New to this edition of *the* canine anatomy text are completely full-color diagrams. The content has also been updated with new

material, nomenclature, and citations which will direct you to the latest scientific literature. The chapters are organized by body system so readers can quickly find information, and the book also contains a chapter on breed categories.

Extended CVM Library Hours for Reading Days and Final Exams

Wednesday, Dec. 5 th	6:00 AM - 1:00 AM
Thursday, Dec. 6 th	6:00 AM - 1:00 AM
Friday, Dec. 7 th	6:00 AM - 5:00 PM
Saturday, Dec. 8 th	10:00 AM - 6:00 PM
Sunday, Dec. 9 th	2:00 PM - 1:00 AM
Monday, Dec. 10 th	6:00 AM - 1:00 AM
Tuesday, Dec. 11 th	6:00 AM - 1:00 AM
Wednesday, Dec. 12 th	6:00 AM - 1:00 AM
Thursday, Dec. 13 th	6:00 AM - 1:00 AM
Friday, Dec. 14 th	6:00 AM - 5:00 PM

Our doors are always open to help you. Contact: Laurel Sammonds at lsammonds@library.msstate.edu or call the CVM Library at 662-325-1256



MISSISSIPPI STATE
UNIVERSITY
University Libraries

Research Coaching Sessions

Attention professors: If you're preparing to assign your students a project that requires a search for scientific evidence in peer-reviewed journals, the CVM Librarian can come to your class to provide a quick review of how to search the literature and the latest updates on how to successfully access the materials. Your students can rely on the CVM Library for searching assistance outside of your office hours so you don't have to worry. We also provide one-on-one research consultations. Just contact Laurel (5-1114 or lsammonds@library.msstate.edu) to arrange for any of these services.

We're happy to help!

Printing Tips

Please remember to give yourself enough time to retrieve your printouts when printing to the CVM Library Computer Lab. There is often a short wait to retrieve your print job due to the large number of people who use our printers. Please report any printer malfunctions to library staff immediately, so that we may help you and your fellow students retrieve your print jobs as quickly as possible. Be aware that sending a print job repeatedly will result in your account being charged for each copy.

Did You Know?

The large and 2 small CVM Library study rooms can be reserved for group study by calling Donna Bishop at 325-1260.

New Books At Your CVM Library

Author	Title	Year	Format
OIE	Manual of Diagnostic Tests and Vaccines for Terrestrial Animals Vol 1 7 th Ed.	2012	Print
OIE	Manual of Diagnostic Tests and Vaccines for Terrestrial Animals Vol 2 7 th Ed.	2012	Print
OIE	Compendium of technical items	2010	Print
OIE	Qualitative risk assessment of the spread of foot and mouth disease by international trade in deboned beef	2011	Print
OIE	Animal health and biodiversity – Preparing for the Future	2012	Print
OIE	Proceedings First OIE/FAO Global Conference on Foot and Mouth Disease: The Way Towards Global Control	2011	Print