

1910

Advertisement Postcard for Pass Christian Isles Featuring Pine Trails, Henderson Point, and Fishing

Follow this and additional works at: <https://scholarsjunction.msstate.edu/mss-lampton-images-ms-coast>

Recommended Citation

Lucius Marion Lampton, MD Historical Images Collection, Special Collections Department, Mississippi State University

This Postcard is brought to you for free and open access by the Mississippi Photographs and Postcards at Scholars Junction. It has been accepted for inclusion in Mississippi Coast Region by an authorized administrator of Scholars Junction. For more information, please contact scholcomm@msstate.libanswers.com.



Canter along stately pine trails.

▼
AT HENDERSON POINT,
MISSISSIPPI

PASS CHRISTIAN ISLES

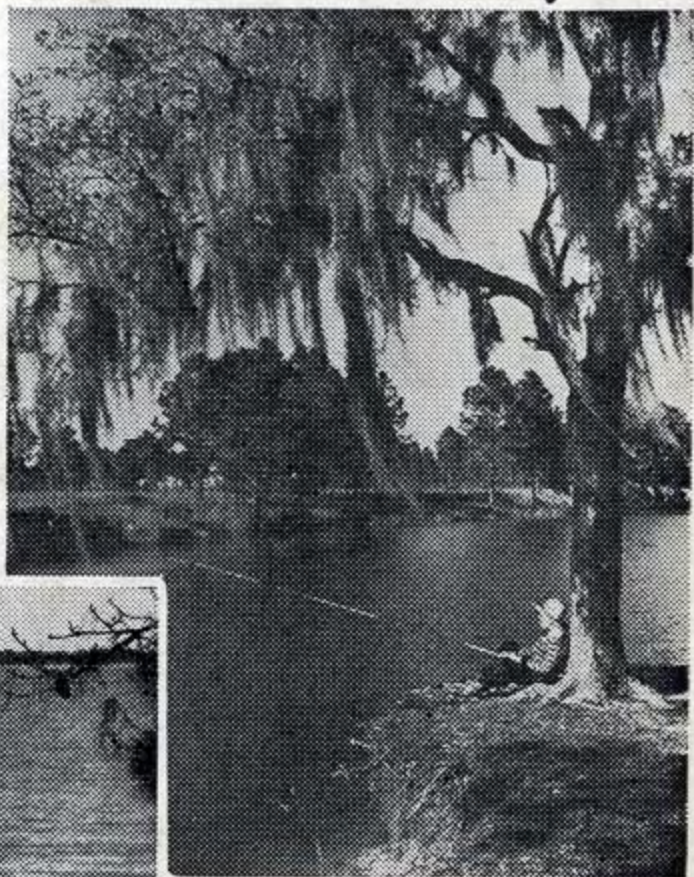


Play on your own Private Beach.



Right in your own front yard.

▼
ONLY 55 MILES EAST OF
NEW ORLEANS



It's Spring again and nature is beckoning to you and your whole family in this land of enchantment - Fish are biting - the sparkling sun-drenched beaches invite the youngsters.

Moderately priced home sites are ready for your selection. Write or phone for an illustrated booklet. Or better still, drive over anytime and see for yourself.

Wallace C. Walker
107 Camp St. Raymond 1343
New Orleans 12, Louisiana

POST CARD

Address only this side



Mr. Clifford F. Favrot
7325 Hampson St.
City