

12-3-1901

## The Upper County Bridge Over Leap River, Hattiesburg, Mississippi

Follow this and additional works at: <https://scholarsjunction.msstate.edu/mss-lampton-images-ms-pine-belt>

---

### Recommended Citation

Lucius Marion Lampton, MD Historical Images Collection, Special Collections Department, Mississippi State University

This Postcard is brought to you for free and open access by the Mississippi Photographs and Postcards at Scholars Junction. It has been accepted for inclusion in Pine Belt Region by an authorized administrator of Scholars Junction. For more information, please contact [scholcomm@msstate.libanswers.com](mailto:scholcomm@msstate.libanswers.com).



ISSUED BY HENLEY & HALL

THE UPPER COUNTY BRIDGE ACROSS LEAP RIVER, HATTIESBUNG, MISS.

*Dec. 3-1907.*

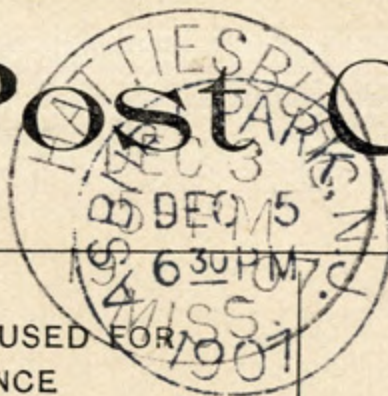
*Best regards.*

*Lloyd*

ywb

\$2

# Post Card



THIS SPACE MAY BE USED FOR  
CORRESPONDENCE

THIS SPACE FOR  
THE ADDRESS ONLY

Business is picking  
up. We have been  
playing to go home.  
I send you some  
cotton by mail in  
a crate box. I hope  
you get to alright.  
Let me know whether  
you get to please tell  
Hazel to write me at Rockville.  
Lloyd

Mrs. H. A. Howland  
X 507 Bond St.  
Asbury Park  
New Jersey