

Fall 11-2022

November 2022 CVM Library Newsletter

Mississippi State University, mid16@msstate.edu

Follow this and additional works at: <https://scholarsjunction.msstate.edu/cvmlibrary-newsletters>

Recommended Citation

"November 2022 CVM Library Newsletter" (2022). *CVM Library Newsletters*. 88.
<https://scholarsjunction.msstate.edu/cvmlibrary-newsletters/88>

This Text is brought to you for free and open access by the College of Veterinary Medicine Library at Scholars Junction. It has been accepted for inclusion in CVM Library Newsletters by an authorized administrator of Scholars Junction. For more information, please contact scholcomm@msstate.libanswers.com.

CVM LIBRARY NEWSLETTER

NOVEMBER 2022

Extended Exam Hours

November 14—November 22

Monday—Thursday 6 am—11 pm

Friday 6 am—5 pm

Saturday Closed

Sunday 2– 11 pm



Holiday Hours

The CVM Library will be closed Thursday, November 24—
Sunday, November 27 and will reopen on Monday,
November 28 from 7 am to 5 pm

Our doors are always open to help you. Email MML-VetLib@msstate.edu or
call the CVM Library at 662-325-1256



MISSISSIPPI STATE
UNIVERSITY

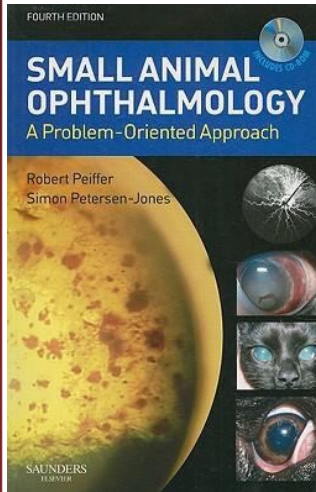
University Libraries

Featured Book of the Month

Small Animal Ophthalmology: A Problem-Orientated Approach

By Robert L. Peiffer Jr.

This new edition retains the successful problem-oriented approach and



full color text of the previous edition, along with wide coverage of all aspects of small animal ophthalmology and more than 150 color illustrations. In addition the new edition offers much more, including an instructional CD of 40 clinical cases comprising video clips and questions, to further improve the reader's skills in reaching an accurate diagnosis and selecting the best treatment option. All chapters have been fully revised and updated to take into account latest developments.

Workshops

Introduction to Zotero

November 9, 2 pm (Online)

Zotero is a free cloud-based citation management system that captures journal articles, books, webpages, and newspaper articles, to seamlessly save them for citations and bibliographies. It comes with MS Word and Google Docs plug-ins to easily manage citations while writing, and it creates your bibliography for you!

Introduction to Mendeley

November 11, 2 pm (Online)

Mendeley is a citation manager that allows you to create your own personal database of references by importing records from databases such as Scopus and others. MSU students, faculty, and staff have access to Mendeley Institutional Edition. Learn how to build a Mendeley library, share references with other researchers, and use the plug-in to cite as you write.

Questions or Suggestions?

- Email us at MML-VetLib@library.msstate.edu or call 662-325-1256 or visit the CVM Library [webpage](#).
-

Monday – Thursday **7AM – 9PM**

Friday **7AM– 5PM**

Saturday **Closed**

Sunday **2PM– 10PM**

*PLEASE REMEMBER TO ENJOY YOUR FOOD BEFORE ENTERING
THE CVM LIBRARY. DRINKS WITH LIDS ARE OK.*

Special Requests

If you have any special requests, in order to limit contact and keep everyone safe, please email any of us and we will do what we can to accommodate you.

Derek Marshall, CVM Librarian:

dmarshall@library.msstate.edu

Morgan Davis, Library Associate:

mdavis@library.msstate.edu

Emily Mccaleb, Library Assistant

emccaleb@library.msstate.edu