

1900

## Tallahatchie River near Philipp, Mississippi

Follow this and additional works at: <https://scholarsjunction.msstate.edu/mss-lampton-images-ms-delta>

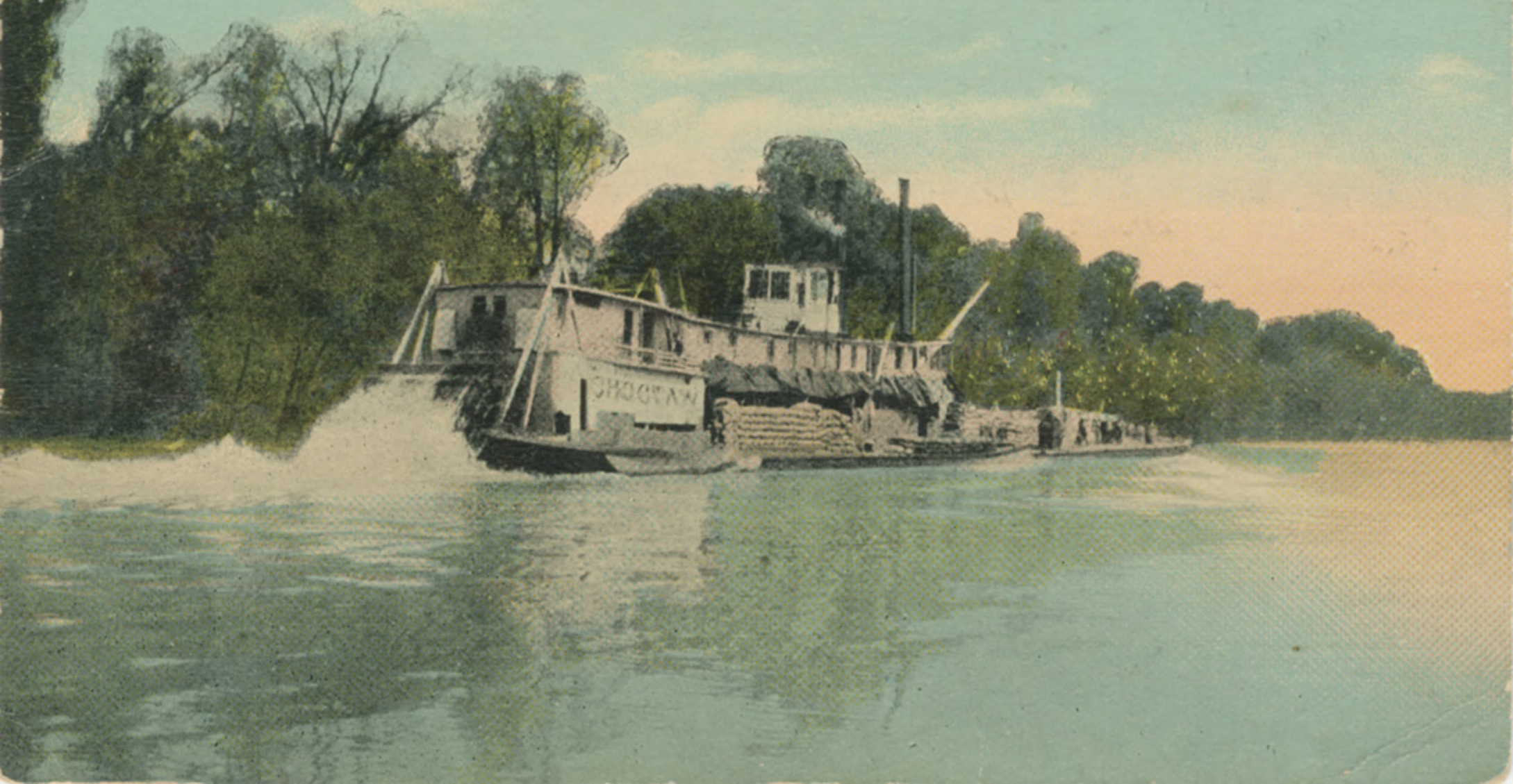
---

### Recommended Citation

Lucius Marion Lampton, MD Historical Images Collection, Special Collections Department, Mississippi State University

This Postcard is brought to you for free and open access by the Mississippi Photographs and Postcards at Scholars Junction. It has been accepted for inclusion in Mississippi Delta Region by an authorized administrator of Scholars Junction. For more information, please contact [scholcomm@msstate.libanswers.com](mailto:scholcomm@msstate.libanswers.com).

Tallahatchie River near Philipp, Miss.



“May, the month of flowers which bloom in profusion on the banks of the beautiful Tallahatchie river, but of far more practical value to man are the forests extending for miles on either side of the stream. Red and White Oak and the Red Gum here attain their greatest size and these giants of the forest are seen in all their grandeur reaching Heavenward as if to pluck the star gems from the blue above, and it is from this class of timber we manufacture the High Class lumber we send you; each year sees a diminishing supply, so send in your order now to the TALLAHATCHIE

LUMBER CO.

Philipp, Miss.

Stock direct from Manufacturer to Consumer.

# Post Card

PLACE  
STAMP HERE

DOMESTIC  
CANADA  
GREAT BRITAIN  
GERMANY

ONE CENT

FOREIGN  
TWO CENTS.

ADDRESS