

Mississippi State University

Scholars Junction

Navy and Battleship Postcards and
Photographs

United States Postcards and Photographs

1900

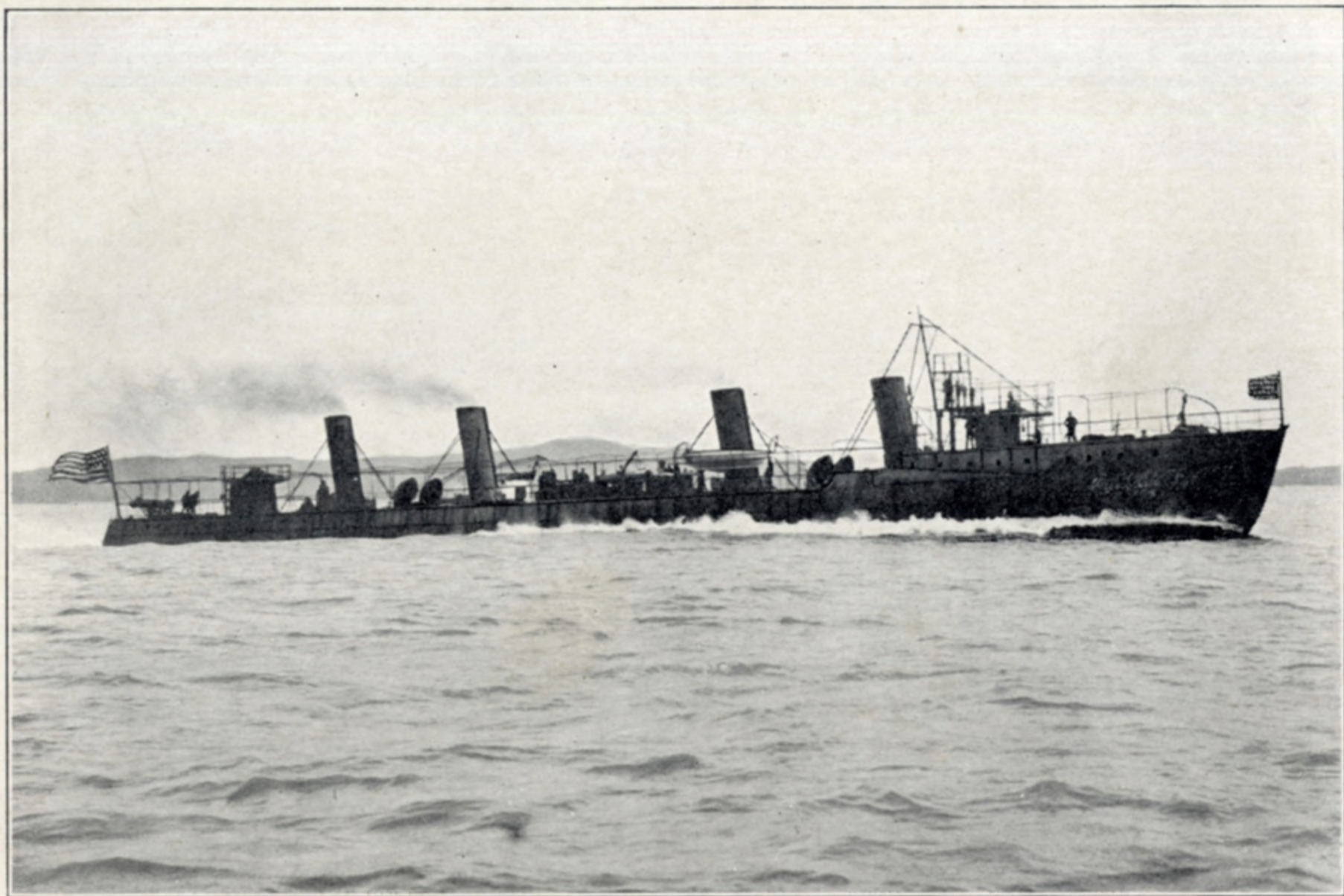
United States Torpedo Boat Destroyer "Paul Jones" On the Water

Follow this and additional works at: <https://scholarsjunction.msstate.edu/mss-lampton-images-us-navy>

Recommended Citation

Lucius Marion Lampton, MD Historical Images Collection, Special Collections Department, Mississippi State University

This Postcard is brought to you for free and open access by the United States Postcards and Photographs at Scholars Junction. It has been accepted for inclusion in Navy and Battleship Postcards and Photographs by an authorized administrator of Scholars Junction. For more information, please contact scholcomm@msstate.libanswers.com.



No. 5035.—U. S. TORPEDO BOAT DESTROYER "PAUL JONES."
125 officers and men. Displacement, 420 tons. Speed, 29 knots. Torpedo tubes, two 18-in.,
Whitehead. Two 3-in. and five 6-pounders, R. F. G.

Post Card

PLACE
STAMP HERE

DOMESTIC
ONE CENT

FOREIGN
TWO CENTS

THIS SPACE FOR CORRESPONDENCE

THIS SPACE FOR ADDRESS ONLY

PRINTED IN THE UNITED STATES