

3-25-1941

**Private Sand Beach in Front of Inn-By-The-Sea, Pass Christian,
Mississippi with Beach Chairs and Beach Huts on the Sand**

Follow this and additional works at: <https://scholarsjunction.msstate.edu/mss-lampton-images-ms-coast>

Recommended Citation

Lucius Marion Lampton, MD Historical Images Collection, Special Collections Department, Mississippi State University

This Postcard is brought to you for free and open access by the Mississippi Photographs and Postcards at Scholars Junction. It has been accepted for inclusion in Mississippi Coast Region by an authorized administrator of Scholars Junction. For more information, please contact scholcomm@msstate.libanswers.com.



PRIVATE SAND BEACH IN FRONT OF INN-BY-THE-SEA, PASS CHRISTIAN, MISS.

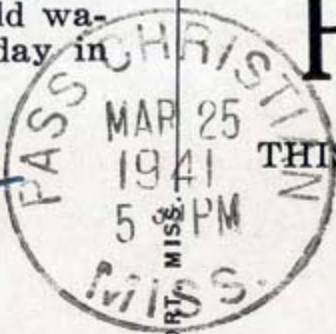
INN THE SEA —I. T. Rhea, Owner—A delightful Inn and cottages among the pines and moss-hung liveoaks, beside the emerald waters of the Gulf of Mexico, open every day in the year.

IN 106

POST CARD



THIS SPACE FOR ADDRESS ONLY



This is where we have just had luncheon. The trip is proving just grand in every one's estimation.

Mr. Noble Crandall
Pepperell,
Mass.

GULFPORT PRINTING CO., GULFPORT, MISS.



3-25-41