

Mississippi State University

## Scholars Junction

---

Navy and Battleship Postcards and  
Photographs

United States Postcards and Photographs

---

5-15-1908

### United States Battleship "Kentucky" Docked on the Water

Follow this and additional works at: <https://scholarsjunction.msstate.edu/mss-lampton-images-us-navy>

---

#### Recommended Citation

Lucius Marion Lampton, MD Historical Images Collection, Special Collections Department, Mississippi State University

This Postcard is brought to you for free and open access by the United States Postcards and Photographs at Scholars Junction. It has been accepted for inclusion in Navy and Battleship Postcards and Photographs by an authorized administrator of Scholars Junction. For more information, please contact [scholcomm@msstate.libanswers.com](mailto:scholcomm@msstate.libanswers.com).

1279 - U. S. BATTLESHIP "KENTUCKY." 686 OFFICERS AND MEN.  
LENGTH 368 FEET. MAIN BATTERY 22 GUNS.





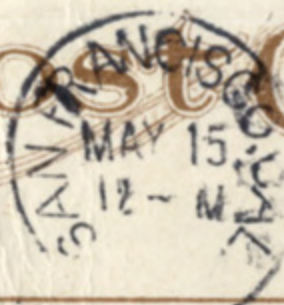
San Francisco  
5-15-08.

Mrs. Mary Percy:  
Gold Hill, Nev.

Dear Aunt Mary:

I very hope you received  
word from Sister Bessie that  
we will call on you on our  
way home. We leave to-morrow  
the 16<sup>th</sup> and if we don't recieve  
word from home we will  
be in S. Hill on Sunday.  
Yours Truly,  
John Dyckhoff.

# Post Card



THIS SPACE FOR CORRESPONDENCE

THIS SPACE FOR ADDRESS ONLY

Mrs. Alice Percy  
Gold Hill  
Nev.