

September 2022

Seated Portrait of Simon Cameron

Earles' Galleries and Looking Glass

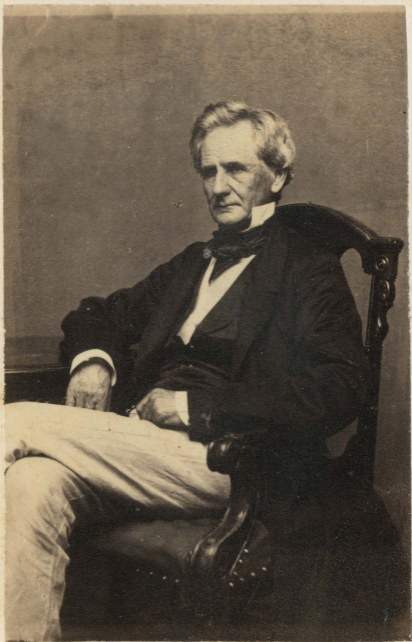
Brady's National Portrait Gallery

Follow this and additional works at: <https://scholarsjunction.msstate.edu/fvw-cdv>

Preferred Citation

[Physical ID#]: [Title], Frank and Virginia Williams Collection of Lincolniana, Mississippi State University Libraries.

This Photograph is brought to you for free and open access by the Frank and Virginia Williams Collection of Lincolniana at Scholars Junction. It has been accepted for inclusion in CDVs by an authorized administrator of Scholars Junction. For more information, please contact scholcomm@msstate.libanswers.com.



Cameron

8
35⁰⁰



FROM
PHOTOGRAPHIC
NEGATIVE,
FROM
BRADY'S NATIONAL
Portrait Gallery.

873