

September 2022

Oval Portrait of Sam Houston

Edward Anthony

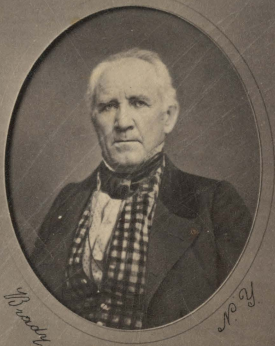
Brady's National Portrait Gallery

Follow this and additional works at: <https://scholarsjunction.msstate.edu/fvw-cdv>

Preferred Citation

[Physical ID#]: [Title], Frank and Virginia Williams Collection of Lincolniana, Mississippi State University Libraries.

This Photograph is brought to you for free and open access by the Frank and Virginia Williams Collection of Lincolniana at Scholars Junction. It has been accepted for inclusion in CDVs by an authorized administrator of Scholars Junction. For more information, please contact scholcomm@msstate.libanswers.com.



Brady.

no. 2.

Sam Houston.

5 4500

Portrait Gallery.
BRADY'S NATIONAL
FROM
NEGATIVE,
PHOTOGRAPHIC
FROM
501 BROADWAY, N. Y.
E. ANTHONY,
PUBLISHED BY

596