

September 2021

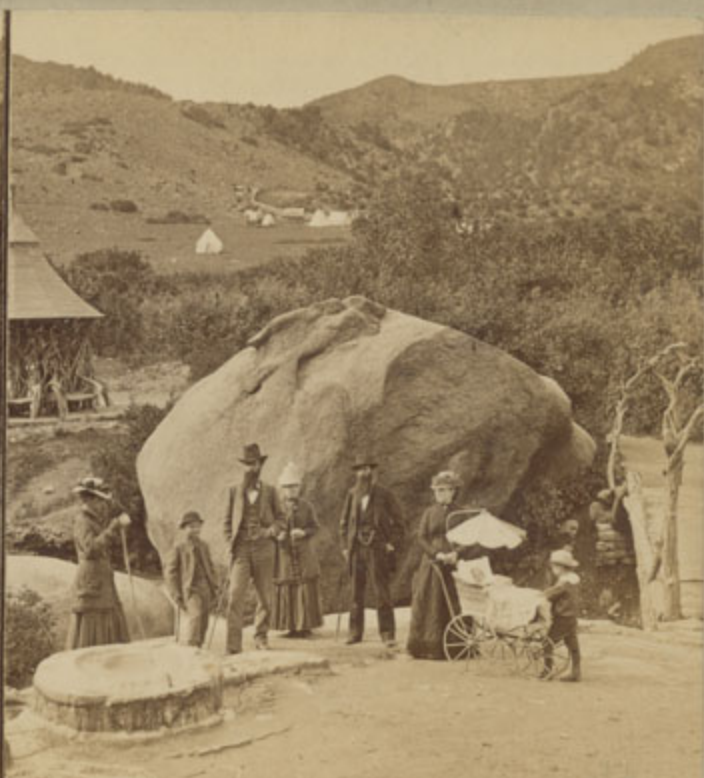
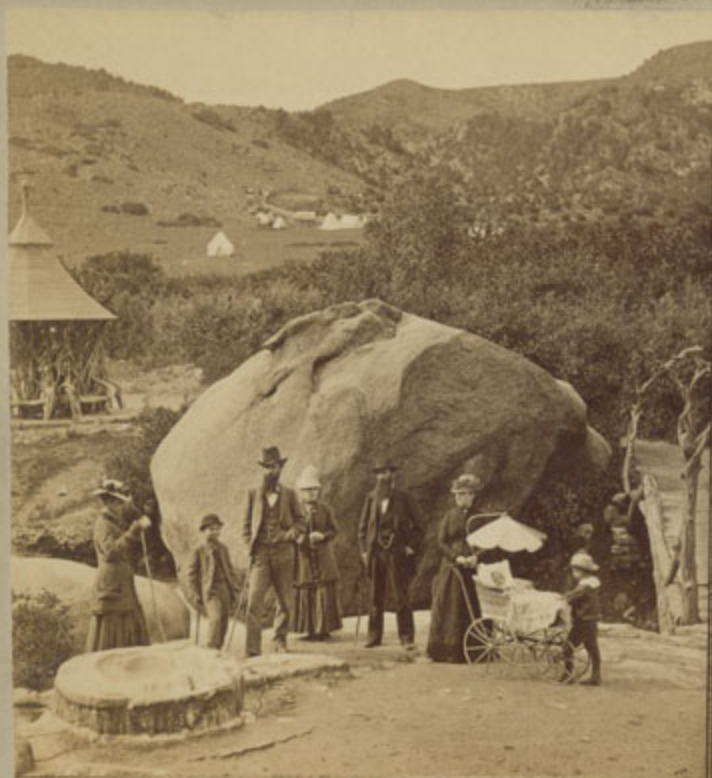
The Soda Spring: (Navajo,) Manitou.

Follow this and additional works at: <https://scholarsjunction.msstate.edu/fvw-artifacts>

Preferred Citation

[Physical ID#]: [Title], Frank and Virginia Williams Collection of Lincolniana, Mississippi State University Libraries.

This Photograph is brought to you for free and open access by the Frank and Virginia Williams Collection of Lincolniana at Scholars Junction. It has been accepted for inclusion in Artifacts by an authorized administrator of Scholars Junction. For more information, please contact scholcomm@msstate.libanswers.com.



118 THE SODA SPRING. (Navajoe,) Manitou.

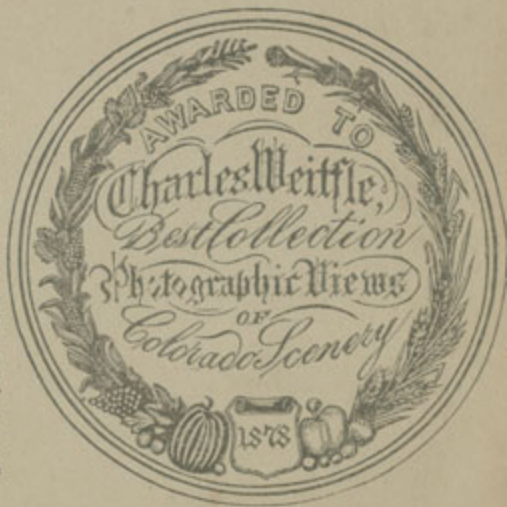
WEITFLE'S

Stereoscopic Views on Line of Denver & R. G. R. R.

Manitou and Vicinity.

Manitou, "the Saratoga of the west," nestled under the cold and snowy Pike's Peak, still it is always warm and pleasant even in coldest weather, noted for its numerous Mineral Springs, the wonderful Scenery in its immediate vicinity and hotel accommodations, which are superb, having some of the largest in the country.

The best views are Manitou with Pike's Peak in the distance,—Rainbow Falls in Summer—Rainbow Falls in Winter—Soda Spring—Iron Spring—Pulpit Rock—Pike's Peak above the clouds—Cameron's Cone. Natural Arch—The Narrows—Bridal Falls. The Abby—Pillar of Jupiter—Lake Moraine Starting for the Summit—50 Fee. Under Ground—Sphynx Cave Rosemma Falls. Naiads Grotto—Minne ha ha Falls—The U. S. Signal Station—Perpetual—Snow—Abyss of Desolation! Bottomless Pit—The Crater, Etc., Etc.



Published and for sale wholesale and retail by Chas. Weitfle,
Central City, Colo.

OVER 500 DIFFERENT VIEWS FOR THE STEREOSCOPE OR GRAPHOSCOPE.

Awarded the Silver Medal of Colorado Industrial Association of 1878 and 1879.

6300