

1909

Mississippi, Oh Beloved

William Leander Sheetz

Follow this and additional works at: <https://scholarsjunction.msstate.edu/cht-sheet-music>

Preferred Citation

[Physical ID#]: [Title], Charles H. Templeton, Sr. sheet music collection. Special Collections, Mississippi State University Libraries.

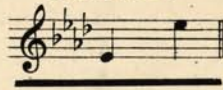
This Sheet Music is brought to you for free and open access by the Charles H. Templeton, Sr. Music Collection at Scholars Junction. It has been accepted for inclusion in Sheet Music Collection by an authorized administrator of Scholars Junction. For more information, please contact scholcomm@msstate.libanswers.com.

Bess. Wilkin

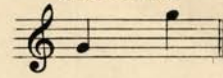
No. 1. in F



No. 2. in Ab



No. 3. in C



MISSISSIPPI, OH BELOVED

A FOLK SONG

WORDS AND MUSIC

by

William Leander Sheetz



PRICE 50 CENTS

PUBLISHED BY
THE WHITE-SHEETZ CO.
BURLINGTON, IOWA

MISSISSIPPI, OH, BELOVED!

WILLIAM LEANDER SHEETZ.

Con espressione.

The piano introduction consists of two staves in 4/4 time, key of B-flat major. The right hand features a melodic line with eighth and sixteenth notes, while the left hand provides a rhythmic accompaniment with chords and single notes. The piece concludes with a final chord in the right hand.

Where the Mis - sis - sip - pi riv - er, Flows through valley shades of green,
 There I wan - der through the for - est, Gath - 'ring flow'rs and fern-leaves gay;
 There at night through vine-clad win - dow, Sounds come float - ing o'er the wold;

The first vocal line is in 4/4 time, key of B-flat major. The melody is simple and lyrical, with lyrics written below the notes. The piano accompaniment consists of chords in the left hand and a melodic line in the right hand.

I'm con - tent to live and lin - ger, In Life's flit - ting ha - zy dream. —
 List - 'ning to the crick - et's chirp - ing, As I pass the time a - way. —
 Owl and whip-poor-will are vy - ing, As in sym - pho - ny of old. —

The second vocal line is in 4/4 time, key of B-flat major. The melody continues from the first line. The piano accompaniment includes a *rit.* (ritardando) marking in the right hand.

Oh, the joy and sun-shine 'bout me! Oh, the thrill of bird 'n song!
 Books I read in folk-lore sto - ry, Songs I sing, from folk-lore theme;
 Light ca-noes are id - ly drift-ing, Voi - ces whis-p'ring "I love you!"

Oh, the scenes of bluff and wild - wood! Nest-ling close the riv - er 'long.
 While the steam-boat's dis-tant rum - bling, Ech - oes far o'er vale and stream.
 Stars and sky in soft re - flec - tion, Pierce thy dark-est, deep - est blue.

cresc. *dim.*

Tempo di Valse

Mis - sis - sip - pi, Oh Be - lov - ed! Thou art ev - er

dear to me! Fa - ther of all flow - ing wa - ters,

Stretch - ing forth to meet the sea. Dim - pled are thy

rit. *a tempo*

Ad.

cur - rent bor - ders, Lav - ing bank, glen, isle and fen

Youth be - decks thy shin - ing sur - face, Though thine age, the

rall.

Ad. *Ad.* *Ad.*

cen - tries span.

Ad. *Ad.* *Ad.*

**Compositions by
WILLIAM LEANDER SHEETZ**

Songs:

IN OLDEN JUNE,.....	60
THE DEW DROP,.....	60
WITHOUT THEE!.....	60
LULLABY,.....	50
YOU ALL CUM TO OUR HOUSE	60
MEMORIES,	50
MISSISSIPPI, OH, BELOVED.....	50
VISION OF HEAVEN..... (<i>Sacred</i>).....	60
CHRIST, THE LIGHT OF LOVE..... (<i>Sacred</i>).....	60

Instrumental:

PAU-PUK-KEE-WIS..... (<i>Indian Dance</i>)	50
CLOUDLAND..... (<i>Intermezzo</i>).....	50
CUPID'S NIGHT SONG..... (<i>Intermezzo</i>).....	50
MARCH, MAJESTIQUE.....	50

Vocal Duets:

MISSISSIPPI, OH, BELOVED..... (<i>Ten. & Alt. or Bar.</i>)	75
MISSISSIPPI, OH, BELOVED..... (<i>Sop. & Alt.</i>).....	75

**Vocal Quartets:
Male Voices,**

LULLABY,.....	15
MISSISSIPPI, OH, BELOVED.....	15
YOU ALL CUM TO OUR HOUSE	15

Mixed Voices:

VISION OF HEAVEN	15
------------------------	----

**Published and For Sale by
THE WHITE-SHEETZ CO.,
824 N. Third St., Burlington, Iowa.**

Order through your local Music Dealer, or directly from us.