

2021

## **Mexican Songs (Little Star)**

Manuel Ponce

Follow this and additional works at: <https://scholarsjunction.msstate.edu/cht-sheet-music>

---

### **Preferred Citation**

[Physical ID#]: [Title], Charles H. Templeton, Sr. sheet music collection. Special Collections, Mississippi State University Libraries.

This Sheet Music is brought to you for free and open access by the Charles H. Templeton, Sr. Music Collection at Scholars Junction. It has been accepted for inclusion in Sheet Music Collection by an authorized administrator of Scholars Junction. For more information, please contact [scholcomm@msstate.libanswers.com](mailto:scholcomm@msstate.libanswers.com).

# MEXICAN SONGS

for

VOICE and PIANO

Arranged

and

Translated

By

## FRANK LA FORGE

YOUNG'S MUSIC STORE  
PHONE 34 - MAIN ST.  
DALLAS, TEXAS

O ASK OF THE STARS BELOVED	HIGH	LOW
TWILIGHT	HIGH	LOW
THE ZEPHYR	HIGH	LOW
THE DOVE	HIGH	LOW
THE SWALLOW	HIGH	LOW
EN CUBA (Tu)	HIGH	LOW
<u>LITTLE STAR</u>	<u>HIGH</u>	LOW
IN SORROW AND SIGHING	HIGH	LOW

Price ~~50~~<sup>60</sup> Cents

G. RICORDI & Co., Inc.

12 WEST 45TH STREET

NEW YORK

AND AT  
LONDON, PARIS, LEIPZIG,  
ROME, PALERMO, NAPLES,  
BUENOS-AYRES AND MILAN.

Printed in U.S.A.

# Little Star

(Estrellita)

MANUEL M. PONCE

Arranged and translated by

FRANK LA FORGE

Slowly

*p legato*



Es - tre - lli - ta del le - ja - no cie - lo que



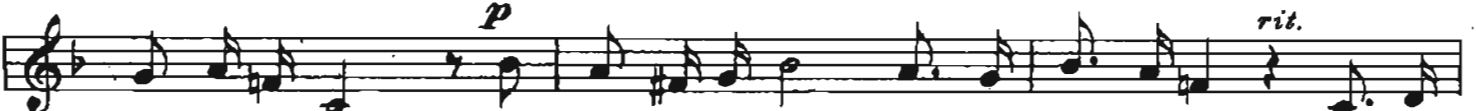
mi - ras mi do - lor que sa - bes mi su - frir Ba - ja y



di - me si me quie - re un po - co ——— pues que ya no



pue - do sin su a - mor vi - vir Tu e - res es - tre - lla mi



fa - ro de a - mor tu sa - bes que pron - to he de mo - rir Es - tre -



lli - ta del le - ja - no cie - lo que mi - ras mi do - lor que



sa - bes mi su - frir. Ba - ja y di - me si me quie - re un



po - co, ——— pues que ya no pue - do, sin su a - mor vi - vir.

# Little Star

(Estrellita)

MANUEL M. PONCE  
Arranged and translated by  
FRANK LA FORGE

Slowly

Voice *p legato*

Lit-tle star on the far hor-

Piano *mf* *pp*

i - zon, Thou know - est all my pain, Thou

seest — what I bear; come and tell me if my love's re -

*rubato*

quit - ed. — For with - out ten - der love my days are sad and

*mf animato*

drear. Thou'rt ev - er my guid - ing —

*p*

star of — love Thou know - est my days will be

*rit. pp*

num - ber'd soon Lit - tle star on the — far hor -

i - zon Thou know - est all my pain, Thou

seest— what I bear; come and tell me if my love's re -

*rubato* quit - ed, — For with out ten - der love my days are sad and drear. *rit.*

*rit.* *pp* *8va*

