

1928

How about me?

Irving Berlin

Follow this and additional works at: <https://scholarsjunction.msstate.edu/cht-sheet-music>

Preferred Citation

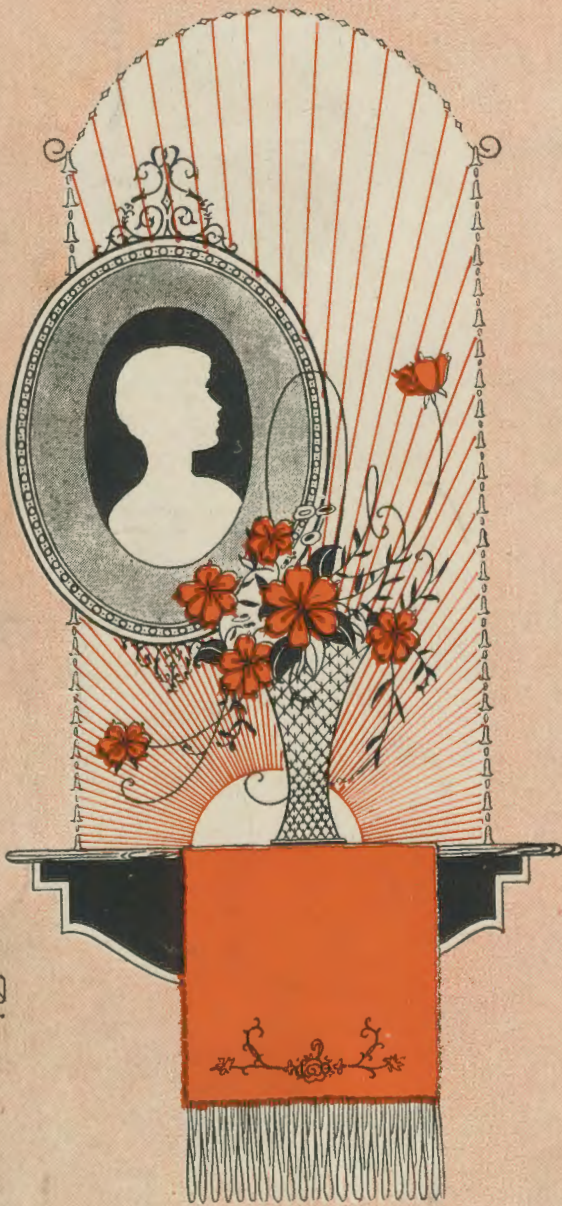
[Physical ID#]: [Title], Charles H. Templeton, Sr. sheet music collection. Special Collections, Mississippi State University Libraries.

This Sheet Music is brought to you for free and open access by the Charles H. Templeton, Sr. Music Collection at Scholars Junction. It has been accepted for inclusion in Sheet Music Collection by an authorized administrator of Scholars Junction. For more information, please contact scholcomm@msstate.libanswers.com.

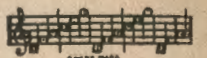
IRVING BERLIN'S

Hoover

HOW ABOUT ME?



F.S.



CODE WORD
"ABOUT"

Irving Berlin, Inc.
 MUSIC PUBLISHERS
 1607 Broadway New York

MADE IN
USA

How About Me?

Tune Ukulele
or Banjulele Banjo



By
IRVING BERLIN

Moderato

VOICE



Too long — I held you close to my heart,
Moon-light was beam-ing down from the skies,

Ukulele Arr. by MAY SINGHI BREEN

Too much_ I loved you right from the start, _____
 Love-light—was gleam-ing deep in your eyes, _____

Too soon__ you van-ished out of my dreams, _____
 Sun-light— for just a mo - ment and then _____

Too late___ to start all o - ver, it seems _____
 Twi - light___ and I was lone - ly a - gain _____

CHORUS

It's o-ver all o-ver, and soon some-bod-y else will

The first system of the chorus features a vocal line in G major with a key signature of one flat and a 4/4 time signature. The lyrics are "It's o-ver all o-ver, and soon some-bod-y else will". The piano accompaniment consists of a right hand with chords and a left hand with a simple bass line. A dynamic marking of *p-f* is present at the beginning of the piano part.

make a fuss a-bout you but how a-bout me?

The second system continues the chorus with the lyrics "make a fuss a-bout you but how a-bout me?". The piano accompaniment features a more active right hand with eighth notes and a steady bass line.

It's o-ver all o-ver, and soon some-bod-y else will

The third system repeats the first line of the chorus: "It's o-ver all o-ver, and soon some-bod-y else will". The piano accompaniment continues with the same rhythmic pattern as the second system.

tell his friends a-bout you but how a-bout me? You'll find some-

The fourth system concludes the chorus with the lyrics "tell his friends a-bout you but how a-bout me? You'll find some-". The piano accompaniment ends with a final chord in the right hand.

bod - y new but what am I to do? I'll still re -

mem-ber you, when you have for - got - - ten And may-be

a ba - by, will climb up - on your knee and put its arms a - bout

you but how a - bout me? me?



“WHAT’LL I DO”—“ALL ALONE”—“ALWAYS”—“REMEMBER”

and now

IRVING BERLIN’S

ROSES OF YESTERDAY

CHORUS

Ros-es of yes-ter-day — fad-ed and thrown a-way — love is a pale bouquet —

p-f

— of yesterday’s ros - es Roses were once in bloom. — here in my

lone-ly room now there’s a faint perfume of yester-day’s ros - es

Copyright MCMXXVIII by IRVING BERLIN, Inc., 1607 B'way, N.Y.
International Copyright Secured Made in U.S.A. All Right Reserved

COPIES ON SALE WHEREVER MUSIC IS SOLD
This Number can also be had for your Phonograph and Player Piano